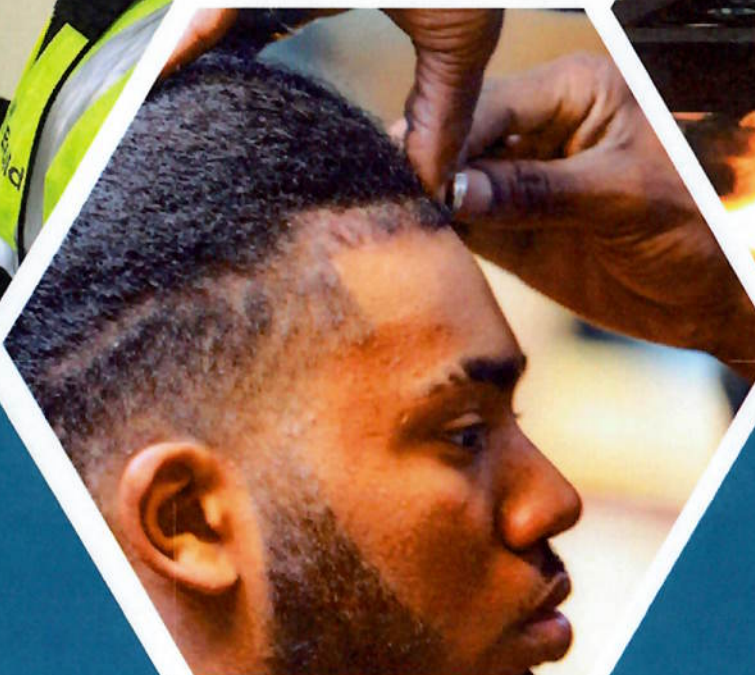




EALING ALTERNATIVE PROVISION

CURRENT TASTER EVENTS & REFERRAL INFORMATION



Who can refer a student to EAP Extend?

Referrals can only be made by a mainstream school. Schools commission provision from us with a student remaining on roll at their mainstream school. The responsibility for the student's progress, welfare and safeguarding remains with the mainstream school with the support of EAP. Students will be on EAP guest roll and will remain single roll with their home school. Schools will be notified of attendance daily.

Do you accept referrals from schools out of area?

We predominantly support schools and students who live within the borough of Ealing. We can support students who live outside our area, however this is dependent on the availability of the provision required.

If you are a school out of area please contact us on extend@eap.ealing.sch.uk before referring

How can we refer a student?

- Complete the online referral form on our website www.ealingalternativeprovision.org.uk on the EAP Extend page.
- Complete and return parent consent form & any additional plans (i.e. health & care plan, EHCP, risk assessments) to: extend@eap.ealing.sch.uk

Once all the referral paperwork has been completed, we will confirm the start date by email including the costs involved. Please be advised that by submitting a referral this does not guarantee you a space.

We accept KS3 & KS4 referrals throughout the year.

Please note: EAP will aim to turnaround referrals as soon as possible to ensure a prompt start date however, the time frame will be dictated by the complexity of the referral and quality of information received.

OUR FEES

For any questions about the information below, please email: extend@eap.ealing.sch.uk.

KS3 Courses	Cost of Placement (Non EHCP Student)	Cost of Placement (EHCP Student – Mainstream School Referral)	Cost of Placement (EHCP Student – Referral Via another service/route)
KS3 The Velobuild Bike Project	£1,560	£1,800	Please contact EAP directly
KS3 Grass Roots - Forest School (12 Weeks)	£1,560	£1,800	Please contact EAP directly
KS3 Therapeutic Support Programme	Various	Various	Please contact EAP directly
Bespoke Commissioned KS3 & Yr10 Placement	Various	Various	Please contact EAP directly

KS4 Courses	Cost of Placement (Non EHCP Student)	Cost of Placement (EHCP Student – Mainstream School Referral)	Cost of Placement (EHCP Student – Referral Via another service/route)
KS4 Build & Grow, Construction Multiskills (1 year)	£5,320	£6,400	Please contact EAP directly
KS4 BUILD - Level 2 Construction (1 year)	£6,000	£6,600	Please Contact EAP directly
KS4 Motor Vehicle (1 Year)	£5,500	£6,500	Please contact EAP directly
KS4 Grass Roots - Forest School	£1,560	£1,800	Please contact EAP directly
KS4 Grass Roots - Early Years Work Experience	Various	Various	Please contact EAP directly
KS4 The VeloBuild Bike Project	£1,560	£1,800	Please contact EAP directly
KS4 Barbering (1 year) - 1 DAY OFFER	£4,680	£5,580	Please contact EAP directly
KS4 Hair, Beauty, Nails & Barbering (1 year) - 1 DAY OFFER	£4,680	£5,580	Please contact EAP directly
KS4 Hair, Beauty, Nails & Barbering (1 year) - 2 DAY OFFER	£9,360	£11,160	Please contact EAP directly
KS4 Therapeutic Support Programme	Various	Various	Please contact EAP directly
Bespoke Year 11 Commissioned Placements	From £140 per day (Sept-June)		N/A

HAIR, BEAUTY, NAILS & BARBERING - LIMITED PLACES



Scan the QR Code
below to register your
interest

Learning Objectives

Hair Skills in Action

- Learn how to shampoo and condition hair like a pro, plus master cool techniques like plaiting and twisting to create stylish looks.

Self-Care & Glow-Up Skills

- Discover how to take care of your hands and skin, with tips and techniques used in real beauty and spa settings.

Styling Like a Stylist

- Get hands-on with blow-drying, styling, and experimenting with temporary hair colour to create bold and creative looks.

Working Safely & Professionally

- Learn how to keep yourself and others safe in a salon environment while building confidence in teamwork and responsibility.

Front Desk & Customer Skills

- Step into the role of a receptionist—greeting clients, answering calls, and building the confidence and communication skills used in real workplaces.



EAP Extend - Alternative Provision
Referral



**BOOK
NOW FOR
SEPTEMBER
2026**

EAP EXTEND Taster Sessions



BOOK TASTER NOW

THURSDAY 25TH JUNE
THURSDAY 2ND JULY
THURSDAY 9TH JULY

KS4 LEVEL 1 INTRODUCTION TO BARBERING - LIMITED PLACES

Barbering is a hands-on, creative course for learners who want to turn their passion for style into a real career. Students will learn essential **barbering techniques**, from **precision cutting** and **fades** to **beard styling** and **client care, building confidence** through practical experience. This course lays the foundation for further training and progression into the barbering and hair industry.

Learning Units

- Core Salon Health & Safety
- Confident Client Care & Communication
- Professional Hair Washing & Care
- Beard Shaping & Grooming
- Modern Men's Haircutting & Fades
- Styling & Finishing Techniques

Scan the QR Code below to register your interest

EAP Extend - Alternative Provision Referral



BOOK NOW FOR SEPTEMBER 2026

EAP EXTEND Taster Sessions



BOOK TASTER NOW
THURSDAY 25TH JUNE
THURSDAY 2ND JULY
THURSDAY 9TH JULY



THE VELOBUILD PROJECT KS3 & KS4

Build it, Ride it, Keep it!!

Proven outcomes in education since 2020

Each learner receives:

- Accredited AQA Certification
- Practical engineering and maintenance skills
- Improved confidence and resilience
- Teamwork and communication skills
- Increased independence and responsibility

**Brand NEW
Mountain
bike
included**

EAP EXTEND Taster Sessions



**BOOK
TASTER
NOW**

**FRIDAY 3RD & 10TH
JULY 2026**

EAP Extend - Alternative Provision
Referral



**BOOK NOW
FOR
SEPTEMBER
2026**



**BTEC PROGRESSION
ROUTE AVAILABLE**



STEP INTO EARLY YEARS EDUCATION WITH WEEKLY FOREST SCHOOL EXPERIENCE



A hands on opportunity for secondary school students (14+) to gain real-world experience of working with young children in a natural outdoor learning environment

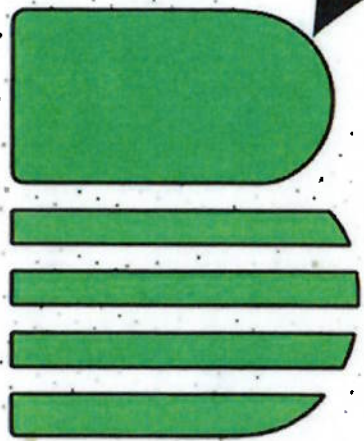
- Support early years children with forest school activities
- Help set up safe, engaging outdoor learning spaces
- Assist with nature-based play, exploration and sensory learning
- Develop communication, teamwork, and leadership skills
- Gain insight into early years education and outdoor pedagogy
- Building Confidence, encouraging empathy and patience

**BOOK NOW
FOR
SEPTEMBER
2026**

EAP Extend - Alternative Provision
Referral



EALING SCHOOLS PROGRAMME



Build

SCHOOL OF CONSTRUCTION

IN PARTNERSHIP WITH...



EALING ALTERNATIVE PROVISION
(EAP EXTEND)



northlondongarages

WHO ARE WE?

AT BSOC WE DELIVER PRACTICAL INDUSTRY RELATED TRAINING IN **CONSTRUCTION** AND **MOTOR VEHICLE** THAT GOES BEYOND QUALIFICATIONS.

OUR PROGRAMMES ARE ABOUT BUILDING RESILIENCE, GOOD BEHAVIOUR AND THE SKILLS NEEDED TO GET YOU STARTED IN INDUSTRIES THAT HAVE A FUTURE.

HANDS-ON LEARNING

THAT PREPARES YOU FOR THE FUTURE.

- ★ INCLUSIVE PATHWAYS TO GET YOU STARTED IN CONSTRUCTION AND MOTOR VEHICLE.
- ★ OUR LINKS WITH SCHOOLS HAVE SUPPORTED STUDENTS TO ACHIEVE SUCCESS IN CONSTRUCTION AND MOTOR VEHICLE.
- ★ WE SUPPORT OUR SCHOOL COMMUNITY WITH A TEAM OF SKILLED AND CARING STAFF.
- ★ WE ENABLE STUDENTS TO GAIN SKILLS FOR SPECIFIC TRADES.

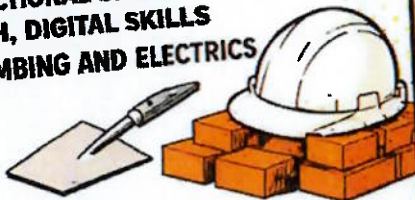
WHILST WE ARE ALL ABOUT HANDS-ON EXPERIENCE, WE ALSO NEED OUR STUDENTS TO ACCEPT THAT THEORY AND CLASS-BASED LESSONS ARE ESSENTIAL TO ACHIEVING THE QUALIFICATIONS THEY NEED FOR THE FUTURE. OUR APPROACH TO LEARNING IS SIMPLE -

SHOW ME = PRACTICAL ⚡ **TELL ME = CLASS-BASED STUDIES!**

IN A NUTSHELL

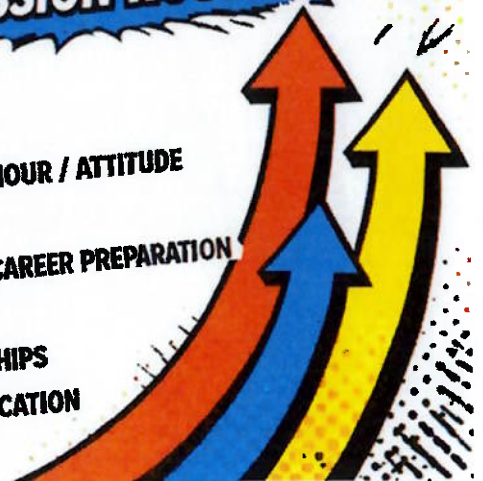
MORE THAN JUST QUALIFICATIONS

- ✓ LEVEL 1 & 2 CONSTRUCTION MAINTENANCE OPERATIONS
- ✓ LEVEL 1 & 2 MOTOR VEHICLE (IMI)
- ✓ LEVEL 1 & 2 FUNCTIONAL SKILLS MATHS, ENGLISH, DIGITAL SKILLS
- ✓ LEVEL 2 & 3 PLUMBING AND ELECTRICS
- ✓ CSCS
- ✓ RENEWABLES

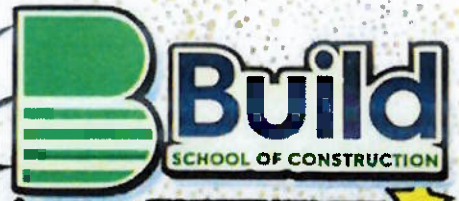


PROGRESSION ROUTES

- ★ RESILIENCE
- ★ CONFIDENCE
- ★ BETTER BEHAVIOUR / ATTITUDE
- ★ TEAM WORK
- ★ MEANINGFUL CAREER PREPARATION
- ★ EMPLOYMENT
- ★ APPRENTICESHIPS
- ★ FURTHER EDUCATION



MOTOR SCHOOL



IN PARTNERSHIP WITH

55 YEARS northlondongarages

-INCLUDING E-BIKE SYSTEMS

RESERVE YOUR SPOT NOW!



LEARN TO BECOME A QUALIFIED MECHANIC!

REPAIR E-BIKES!



ENROL NOW!

- ✓ Motor Vehicle Repair
- ✓ Learn E-Bike Diagnostics
- ✓ Gain In-Demand Skills!



EMAIL: CONTACT@BUILDSOC.CO.UK

TEL: 01895 541222

OUR TASTER SESSIONS

OUR TASTER SESSIONS ARE ALL ABOUT
**RAISING AWARENESS OF
CONSTRUCTION, MULTI SKILLS
AND MOTOR VEHICLE.**

THIS IS A FAST-PACED AND FUN SESSION
THAT GIVES STUDENTS A TASTE OF
WHAT TRADESPEOPLE DO.
WE ALSO RAISE AWARENESS OF THE
CAREER POSSIBILITIES IN BOTH
INDUSTRIES...



**BOOKING A
TASTER SESSION
IS EASY AND
FLEXIBLE!**

**SCAN NOW
TO BOOK A
TASTER SESSION!**



CONTACT US AND BOOK A
FREE
TASTER SESSION!

CONTACT:

extend@eap.ealing.sch.uk

DISCOVER A RANGE OF
CAREER PATHS AND
POSSIBILITIES IN
**CONSTRUCTION,
MULTI SKILLS AND
MOTOR VEHICLE!**



THE PROCESS

1

SCAN QR CODE

2

COMPLETE REFERRAL FORM

3

EAP'S DUE DILIGENCE

4

EMAIL EXTEND ALL DOCUMENTS -
CONSENT, EHCP, MEDICAL, GENERAL RISK ASSESSMENTS.

5

ATTEND TASTER SESSION

6

SIGN SLA

7

CONFIRMATION OF PLACEMENT & START DATE

8

INVOICE FOR PLACEMENT

9

LEARNING JOURNEY BEGINS



WE ENCOURAGE SCHOOLS TO VISIT LEARNERS
AT LEAST ONCE PER TERM TO REVIEW PROGRESS
AND SUPPORT POSITIVE OUTCOMES.

OUR FEES

START FROM

£149

PER DAY PER LEARNER

CHOOSE FROM A

12 WEEK
PROGRAMME

OR

AN **ACADEMIC YEAR**

SCAN HERE
FOR SEPTEMBER
INTAKES

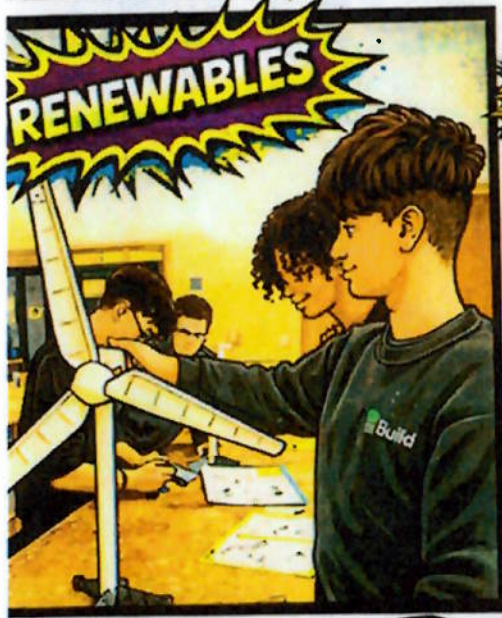


BUILD & GROW PROGRAMME

CONSTRUCTION, MULT SKILLS AND MOTOR VEHICLE

COURSE GUIDE

YEARS 9, 10, & 11
(AGES 14-16)



BUILD & GROW PROGRAMME

CONSTRUCTION, MULTT SKILLS AND MOTOR VEHICLE

1. PLAN & PREPARE!



TEAMWORK
BUILDS MORE
THAN SKILLS!

2. BUILD & CRAFT!



MEASURE.
BUILD.
ACHIEVE!

3. CREATE & CONSTRUCT!



FROM
VISION TO
REALITY!

4. BUILD A POND!



BUILDING
HABITATS,
CREATING
IMPACT!

5. TRAIL MAKING!



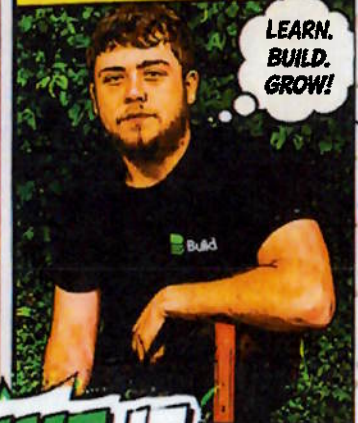
PATHS TO
ADVENTURE!

6. CAMP FIRE CRAFTS!



FIRE.
FOOD.
FRIENDSHIP.

7. SKILLS FOR LIFE!



LEARN.
BUILD.
GROW!

LEARN IT / BUILD IT / LIVE IT

KABOOM!

YEAH!

TEAM BUILD!

**LOOK FORWARD
TO WORKING WITH YOU!**

contact@buildsoc.co.uk





www.buildsoc.co.uk

EXPRESSION OF INTEREST

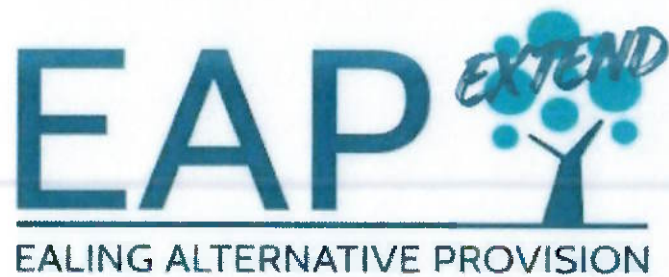
If you would like to enquire about any of our programmes or discuss a student you have in mind, scan the QR code below and complete a short form and the Extend team will arrange a consult for discussion.

EAP EXTEND Expression of Interest



OUR PROVIDERS





HOW TO FIND US

Follow Us On Instagram

 @EAP_Extend



Ealing Alternative Provision (EAP)
Compton Close
Ealing
W13 0LR

Tel: 0208 991 8570

Email: extend@eap.ealing.sch.uk